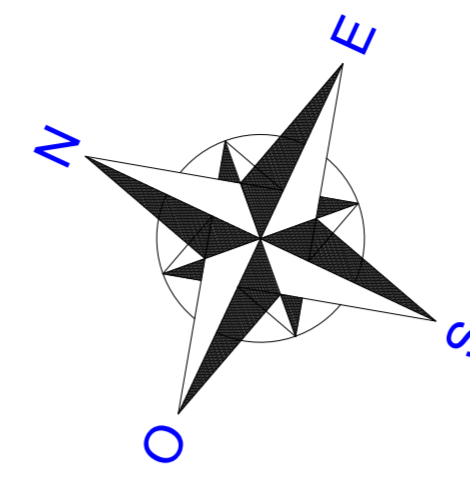
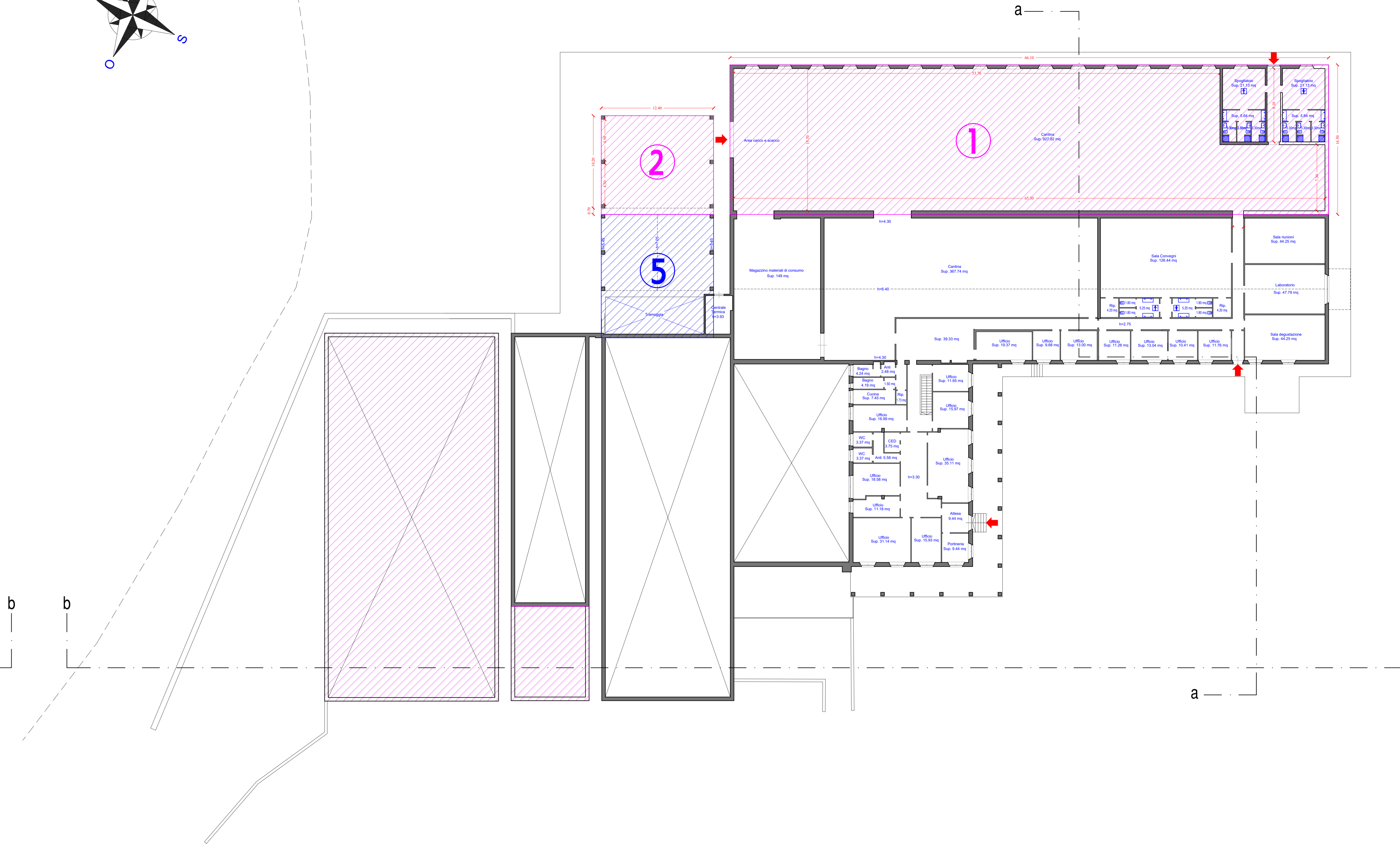


CANTINA IN PROGETTO	
1	1090,65 MQ
2	135,16 MQ
3	89,44 MQ
4	779,52 MQ
TOTALE	2094,77 MQ

VOLUMI TECNICI DA TRASFORMARE DA PRECARI A STABILI	
5	168,40 MQ
6	259,29 MQ
TOTALE	427,69 MQ



PIANO SEMINTERRATO



PIANO TERRA