

COMUNE DI MONTEPULCIANO

Provincia di Siena

VARIANTE AL PIANO OPERATIVO

**NUOVA SCHEDA D'INTERVENTO M IC 17
E MODIFICA DELLA SCHEDA D'INTERVENTO M IC 13**

Frazione : Capoluogo

ADOZIONE

TAVOLA 3

ESTRATTI

SCALA 1 /

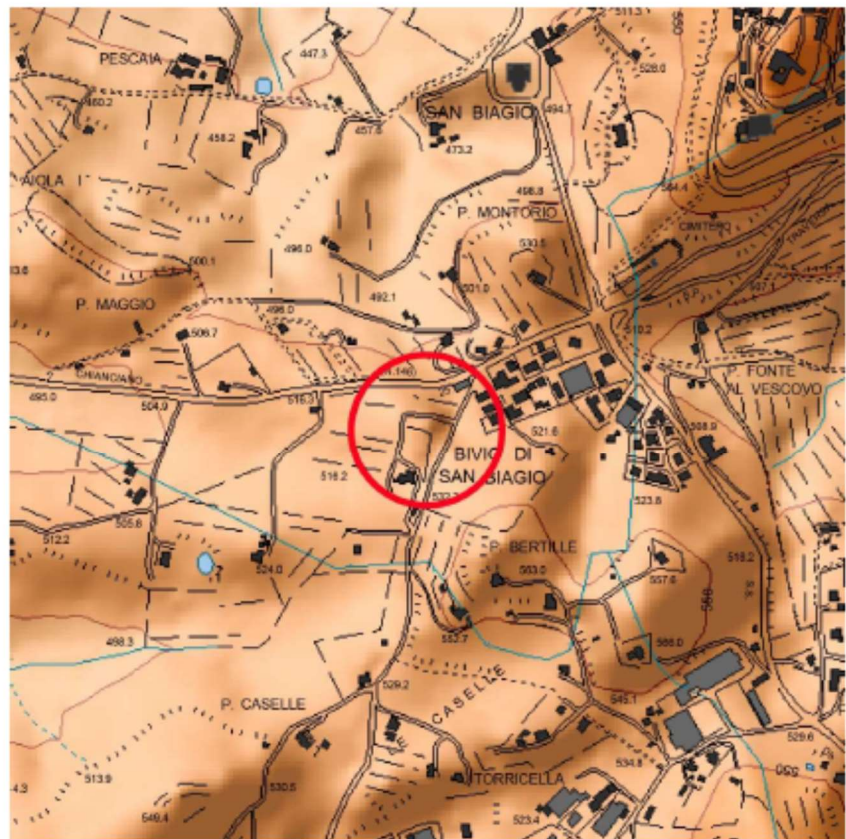
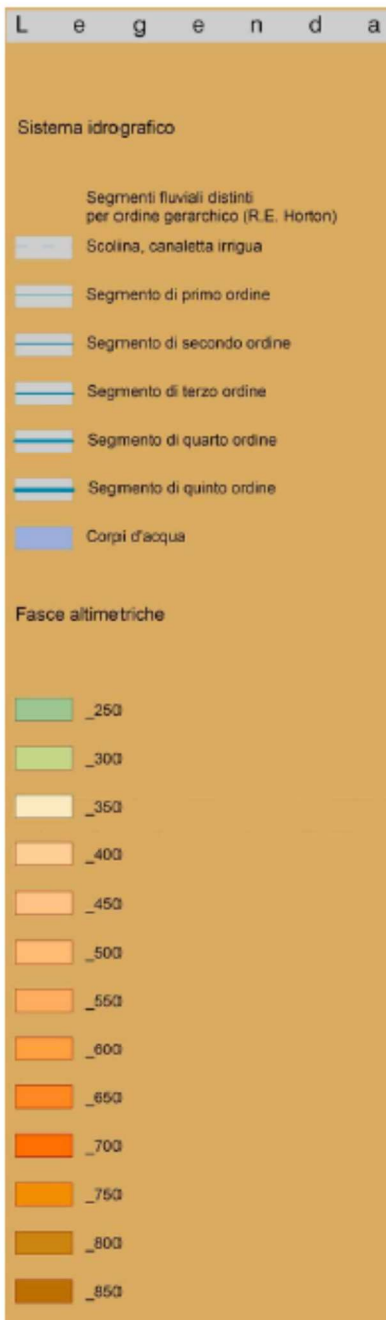
Il Responsabile del Procedimento

arch. Massimo Bertone

Montepulciano

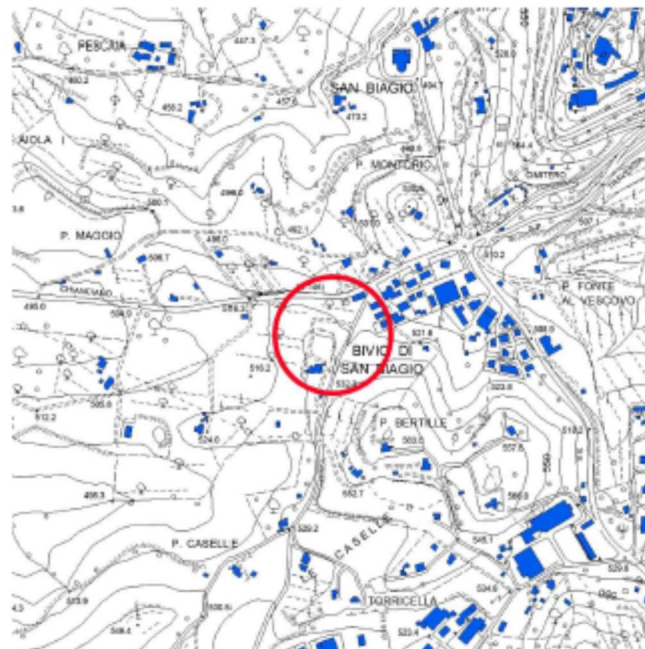
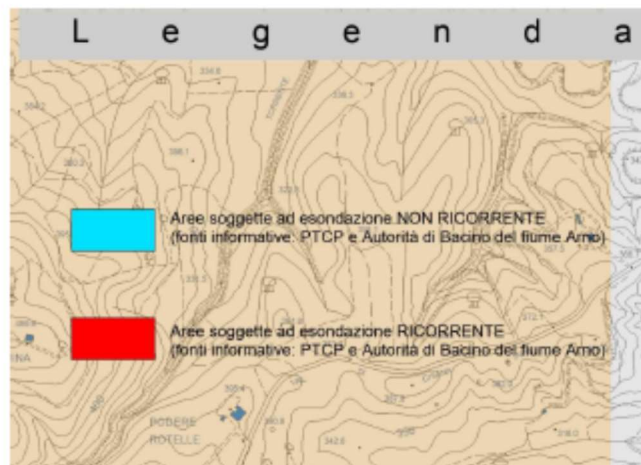
MAGGIO 2021

QC01_CARTA DEGLI ELEMENTI FISICI DEL TERRITORIO



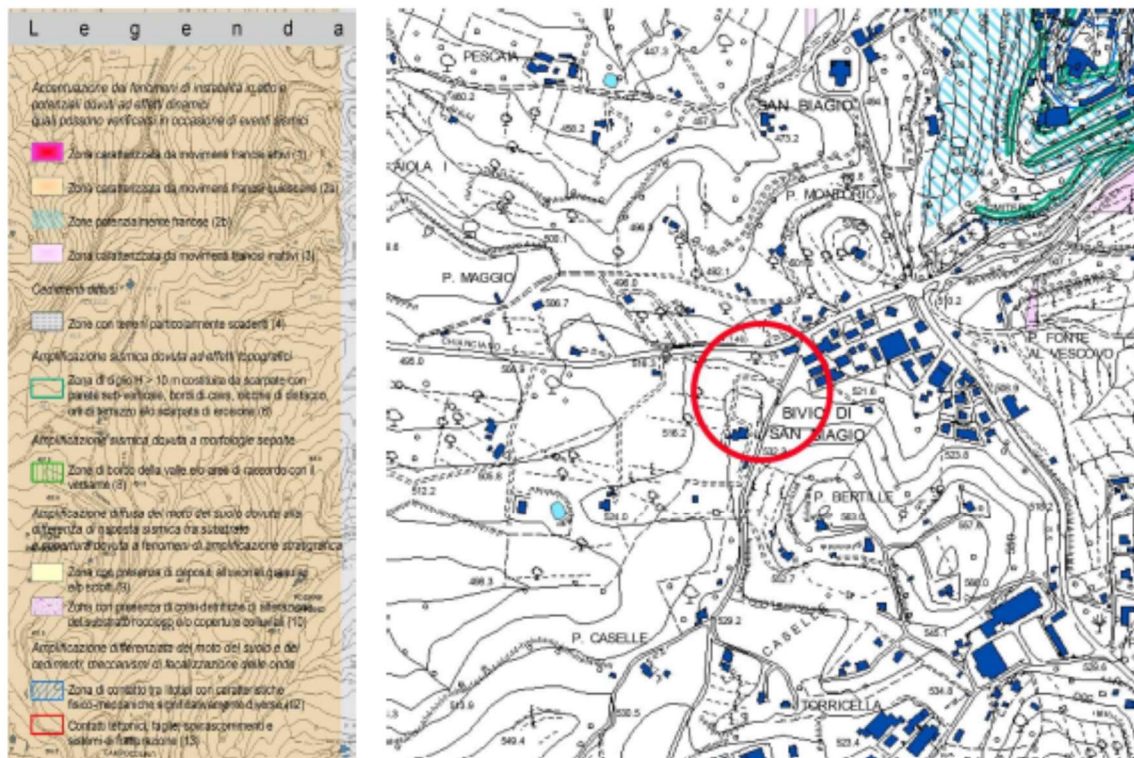
SCALA 1:10000

QC08_AREE ALLAGATE



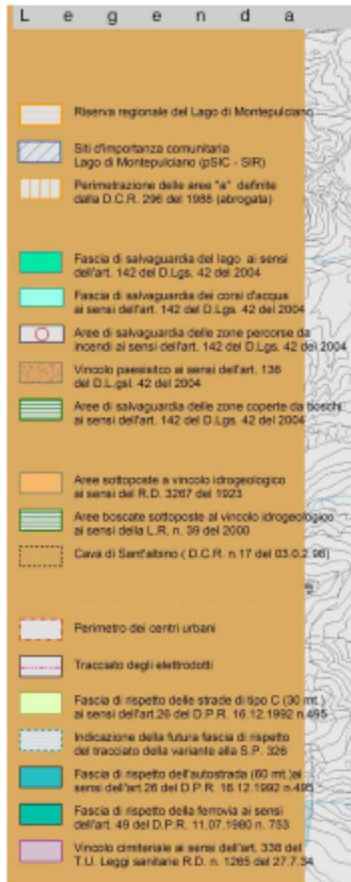
SCALA 1:10000

QC09_ZONE A MAGGIOR PERICOLOSITA' SISMICA LOCALE



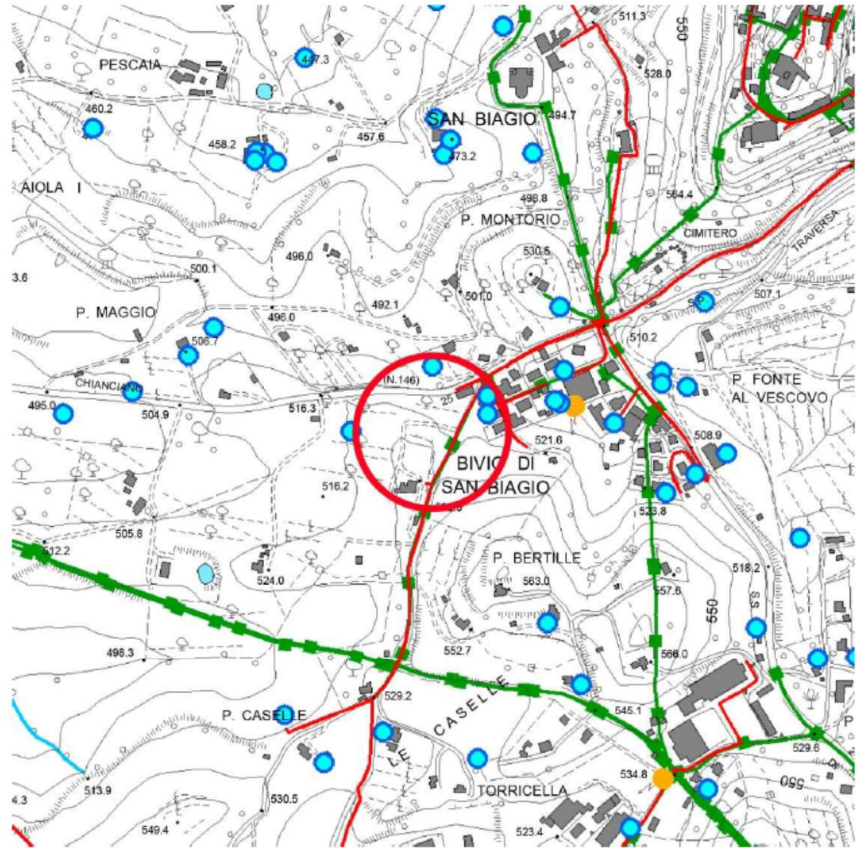
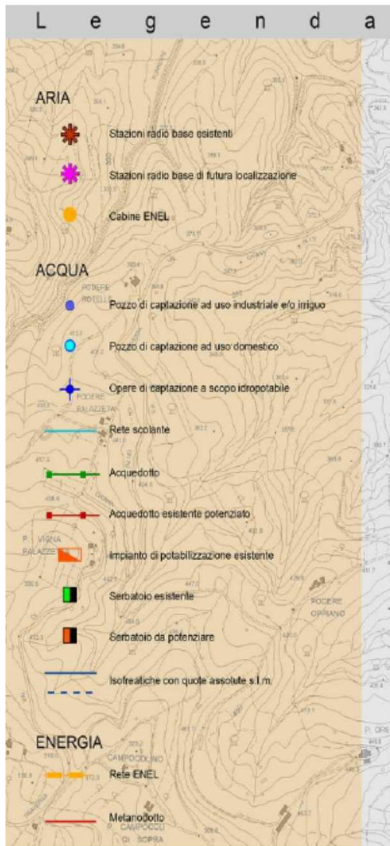
SCALA 1:10000

QC10_CARTA DEI VINCOLI E DELLE SALVAGUARDIE



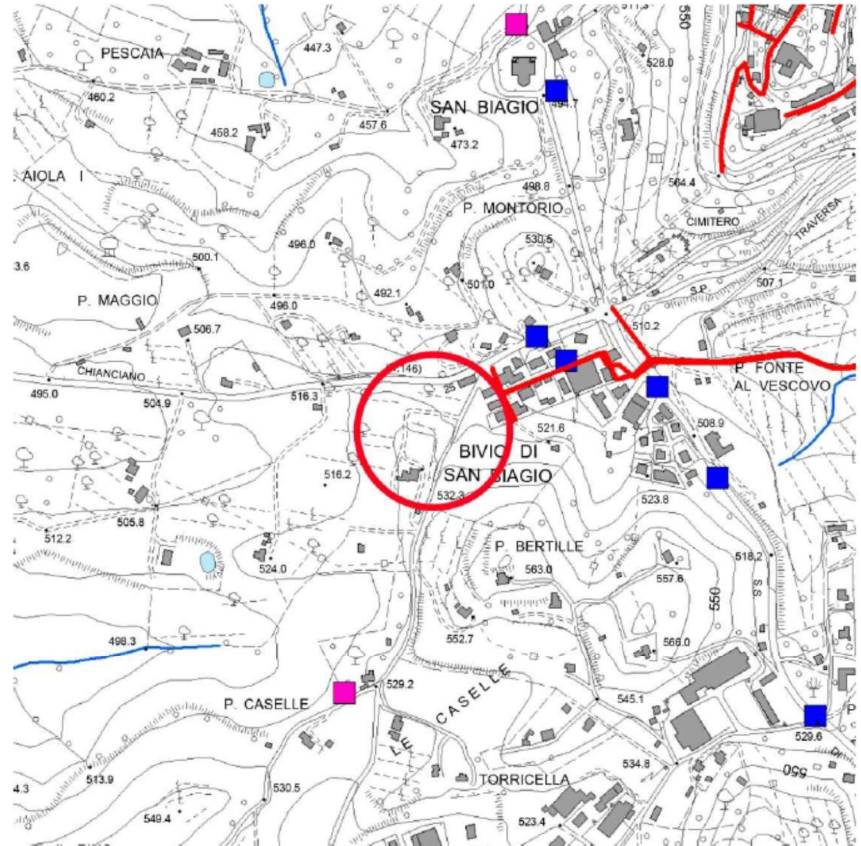
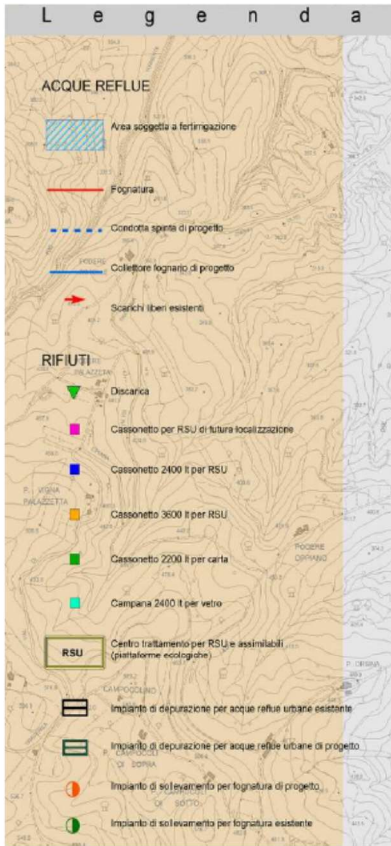
SCALA 1:10000

QC11.1_VEA CARTA DELLE RETI (ARIA-ACQUA-ENERGIA)



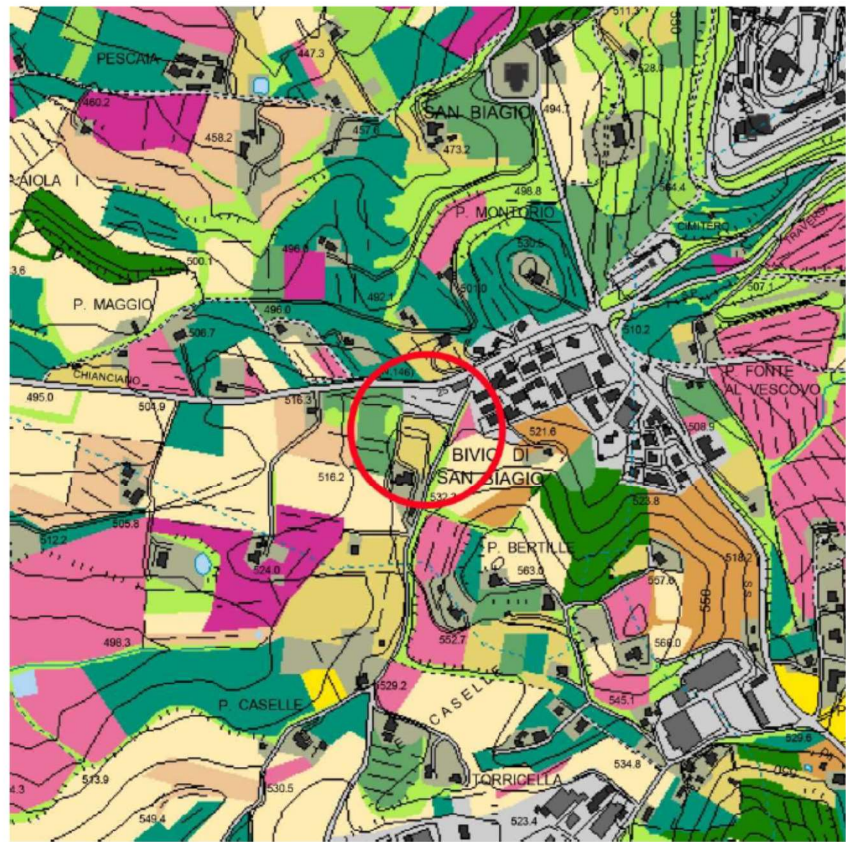
SCALA 1:10000

QC11.2_VEA CARTA DELLE RETI (ACQUE REFLUE-RIFIUTI)



SCALA 1:10000

QC13_USO DEL SUOLO AGRICOLO E FORESTALE



SCALA 1:10000

QC15_CARTA DELLE EMERGENZE E DELLE RISORSE AMBIENTALI



SCALA 1:10000

QC16_STATO ATTUALE DEI SERVIZI E DELLE INFRASTRUTTURE

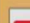





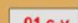

Legend

Rete delle infrastrutture per la mobilità

Rete delle ferrovie

-  Linea veloce
-  Linea lenta

Rete delle strade


-  Autostrade
-  Strada statale
-  Strada provinciale
-  Strada comunale
-  Strada vicinale
-  Strada secondaria
-  Riferimento alla classificazione delle strade D.C.C n° 151 del 20.4.1968
-  Stazioni

Servizi

Aree per l'istruzione

-  Scuole


Aree per attrezzature d'interesse comune

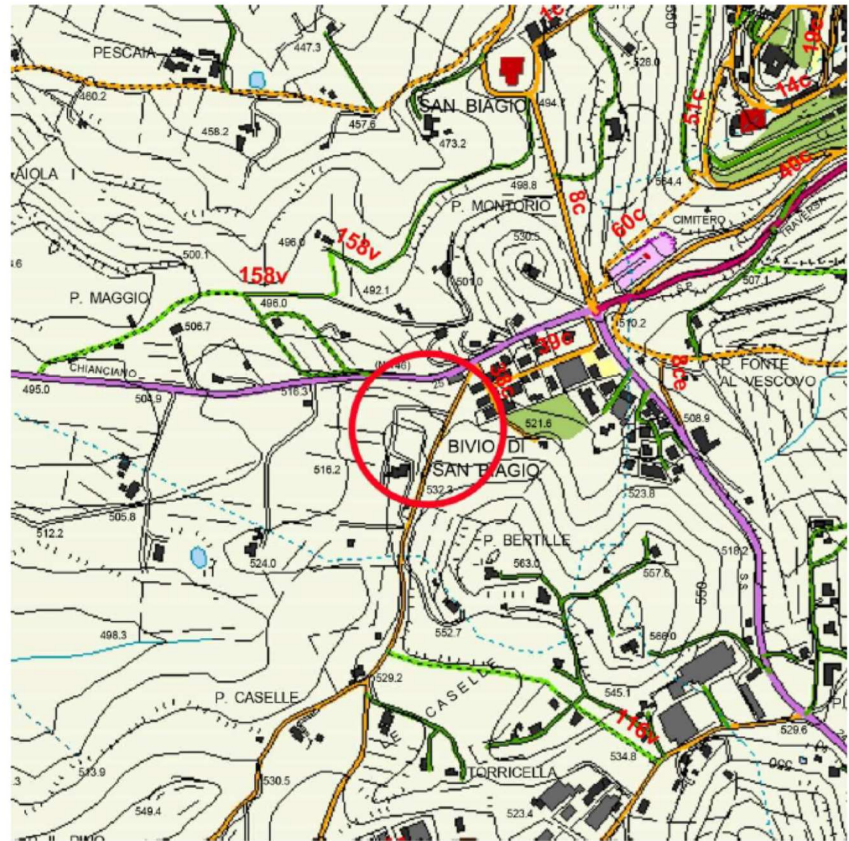
-  Luoghi per il culto
-  Centri civici, sociali e culturali
-  Strutture sanitarie e assistenziali
-  Uffici amministrativi e pubblici servizi
-  Complesso cimiteriale, ed

Aree e attrezzature sportive e ricreative

-  Impianti sportivi
-  Piscina
-  Parchi e giardini

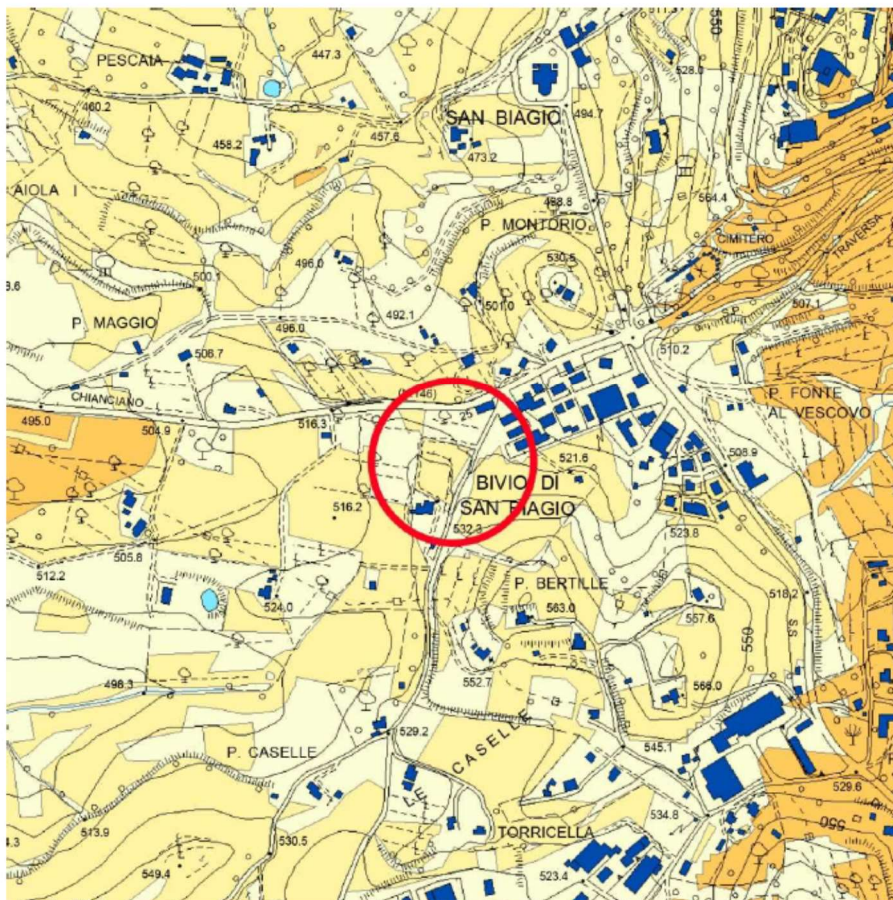
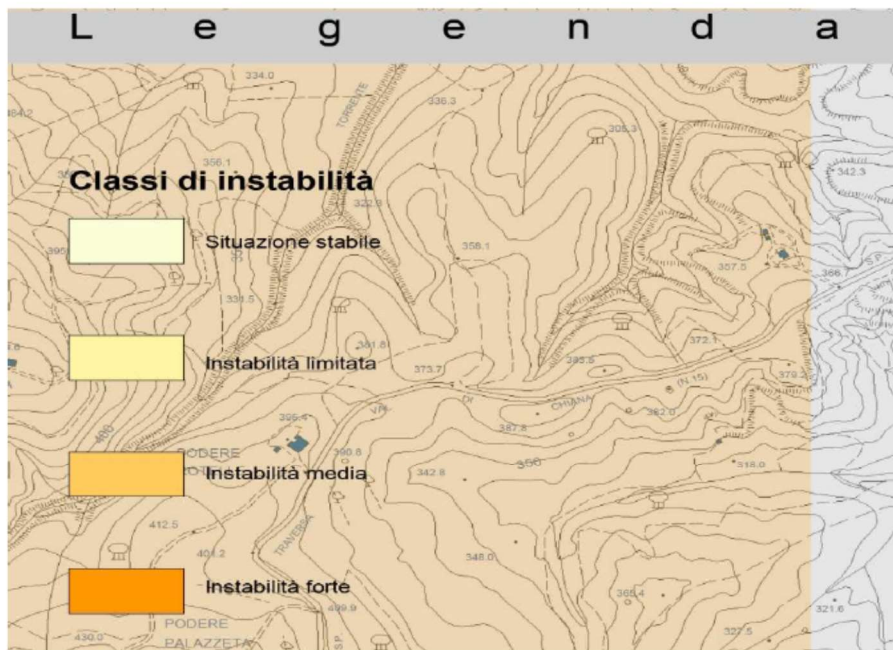
Aree a parcheggio

-  Parcheggi



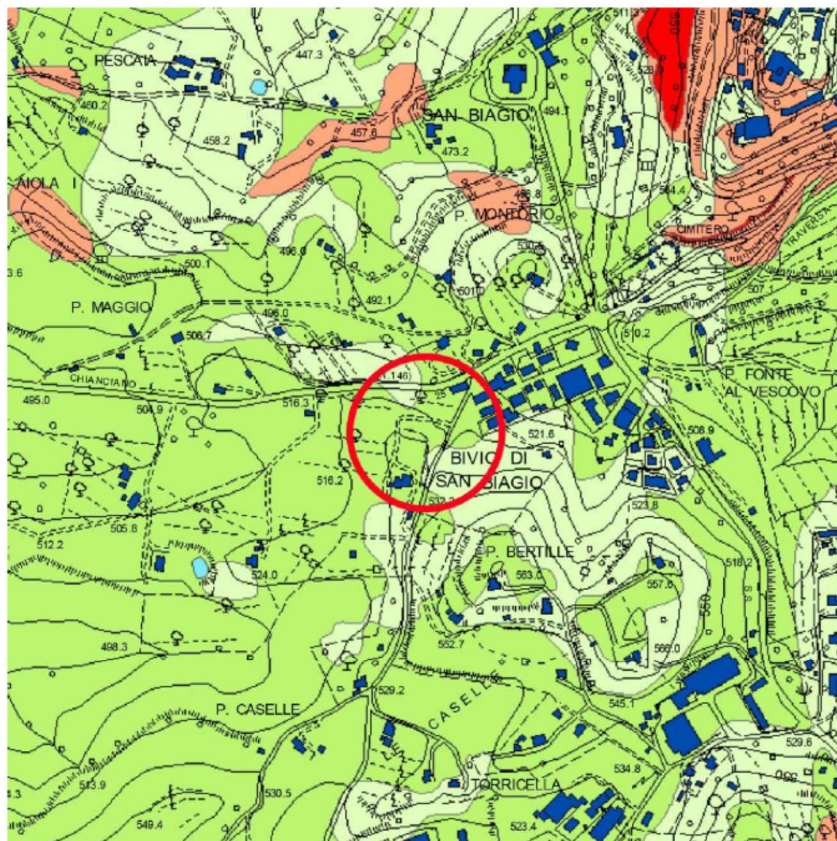
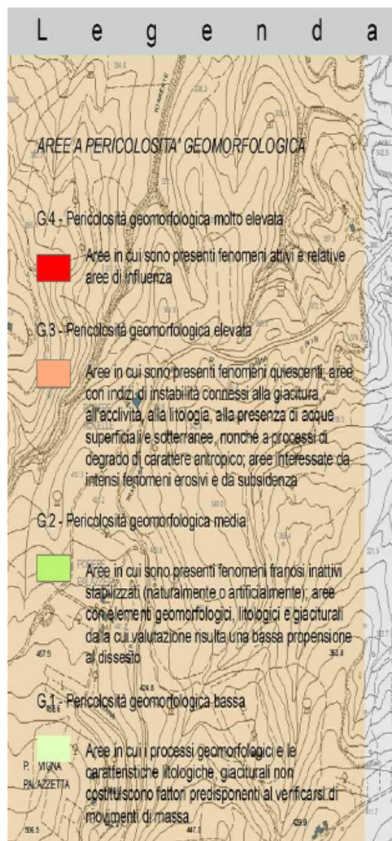
SCALA 1:10000

P02_STABILITA' POTENZIALE INTEGRATA DEI VERSANTI



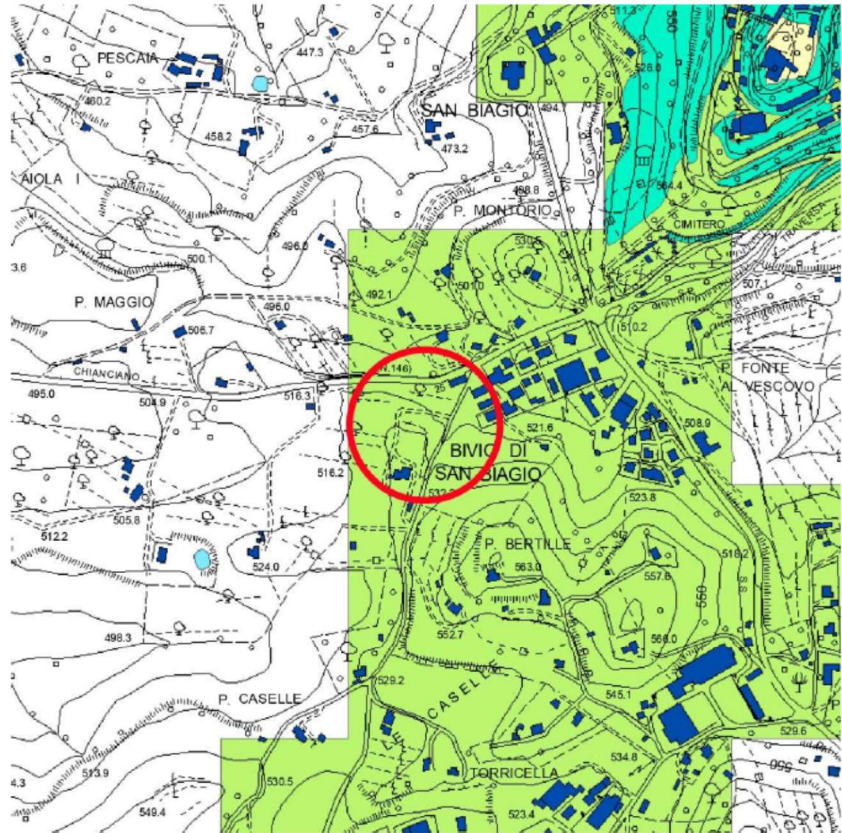
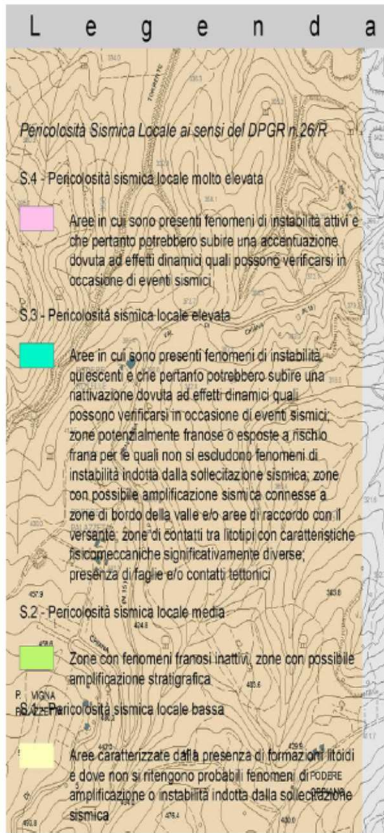
SCALA 1:10000

P03_ PERICOLOSITA' GEOLOGICA



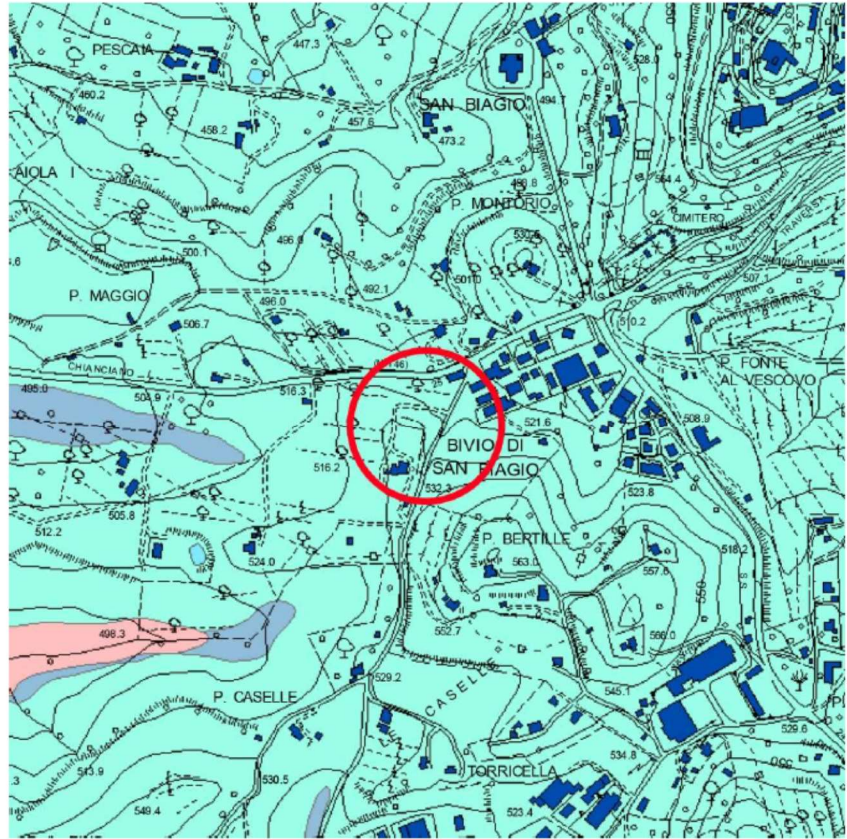
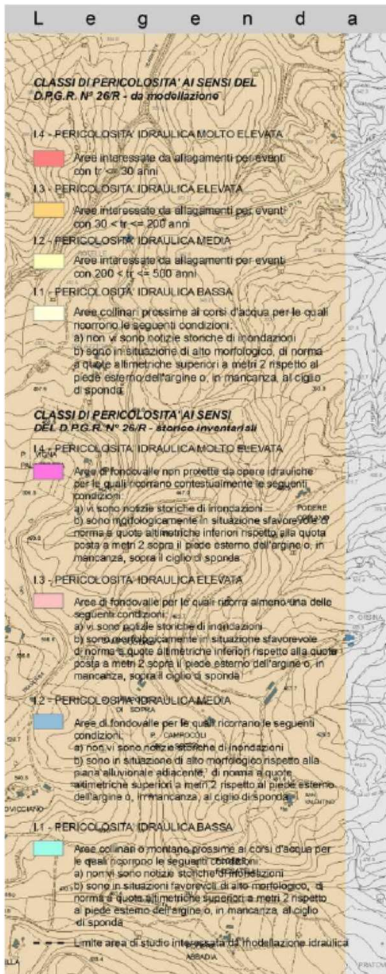
SCALA 1:10000

P03B_ PERICOLOSITA' SISMICA LOCALE



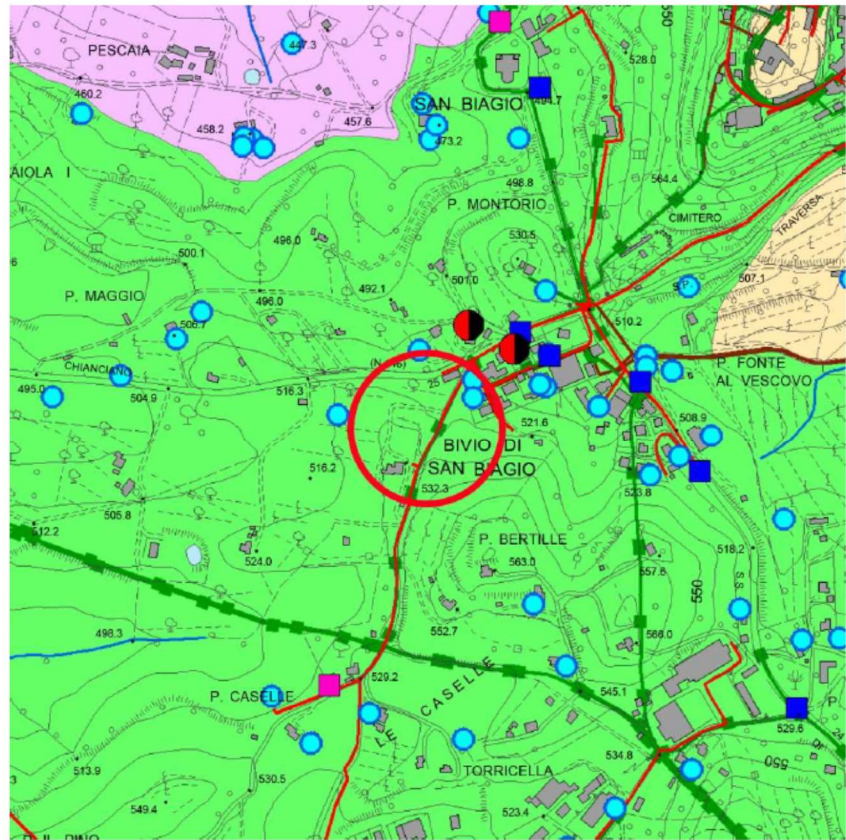
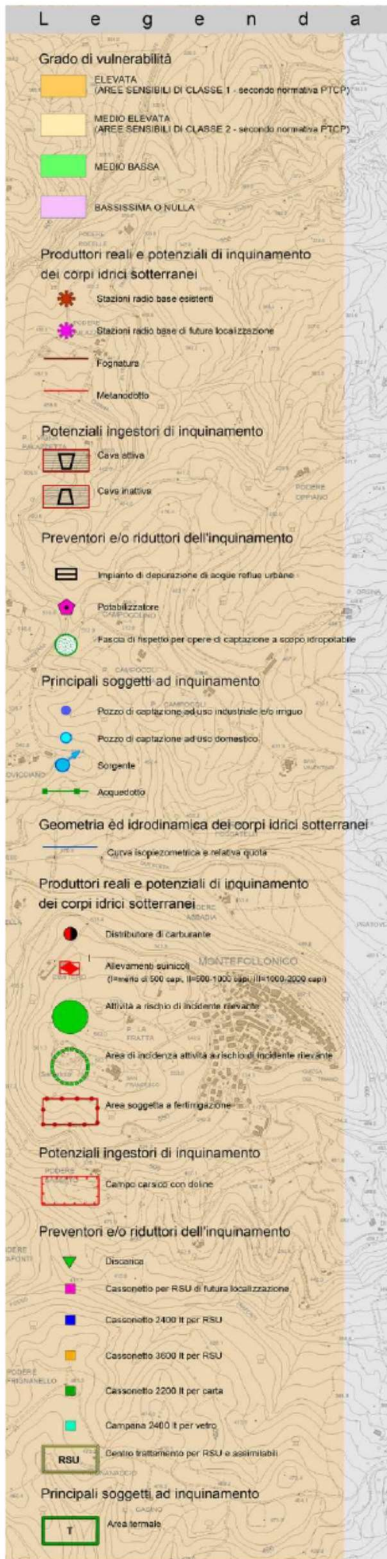
SCALA 1:10000

P04_ PERICOLOSITA' IDRALUICA



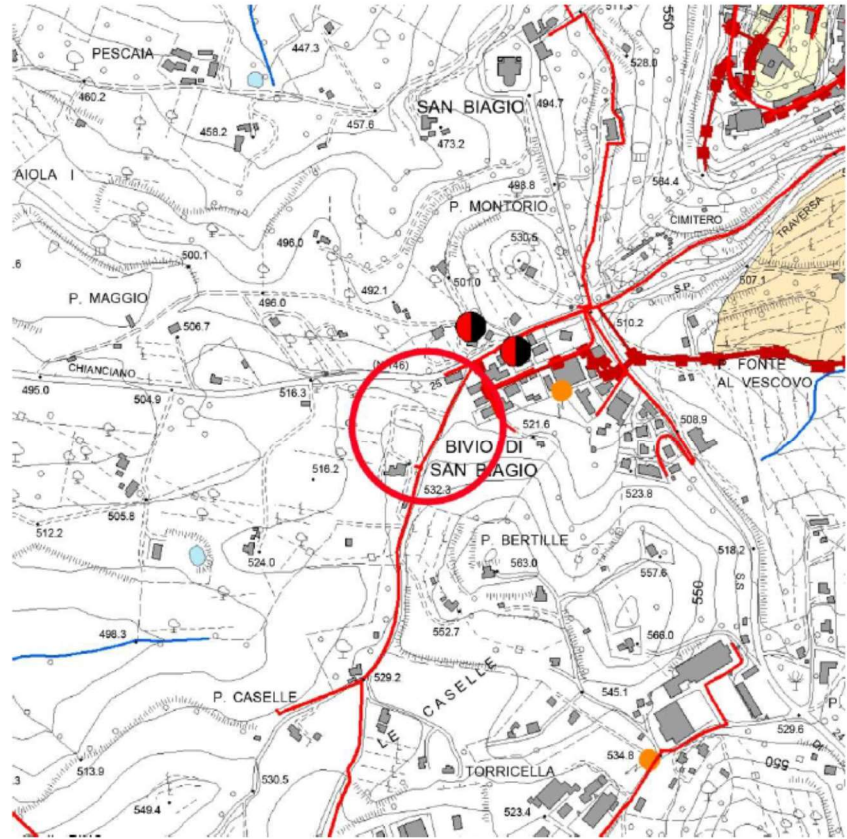
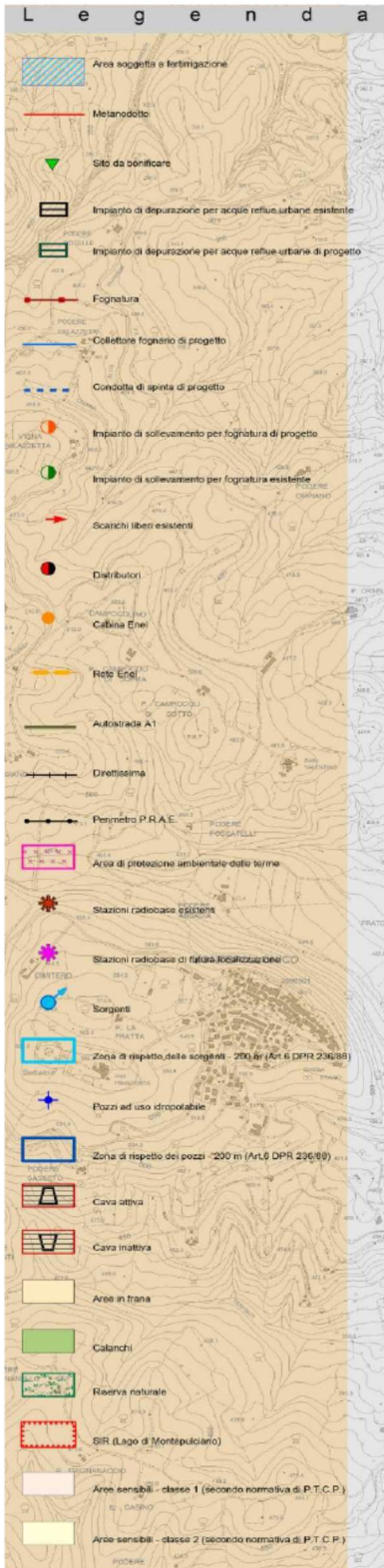
SCALA 1:10000

P05_ VULNERABILITA' DEGLI ACQUIFERI



SCALA 1:10000

P06_CARTA DELLE CRITICITA' DEL TERRITORIO






SCALA 1:10000












P07_SISTEMI TERRITORIALI, SUB-SISTEMI DI PAESAGGIO

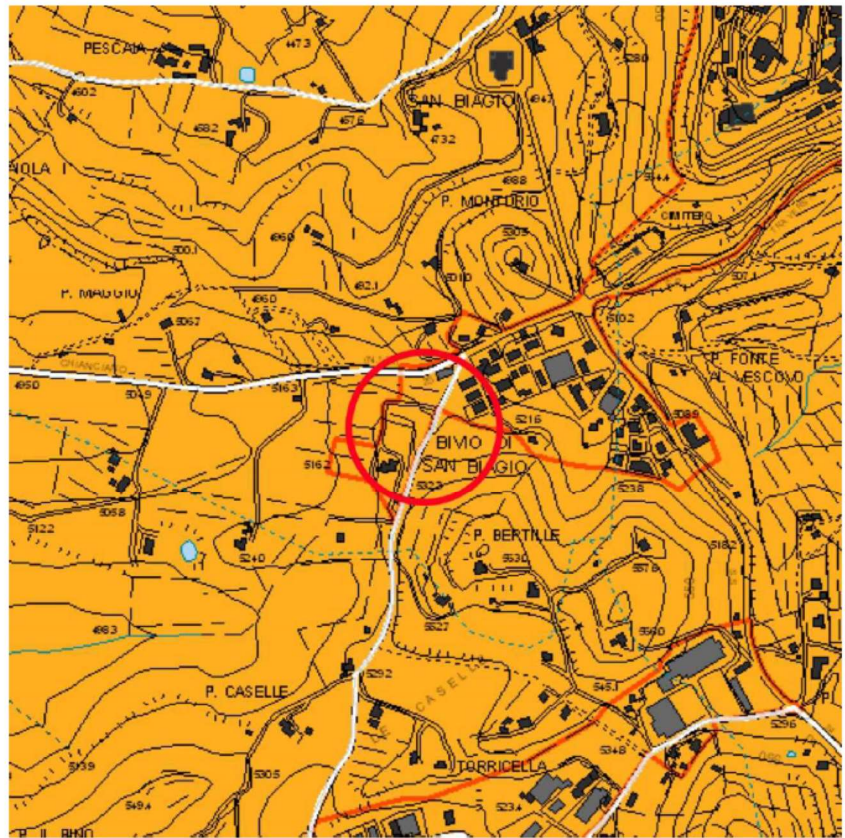
L e g g e n d a

Sistemi territoriali :

-  delle colline interne
-  dell'ambiente pedecollinare
-  della pianura

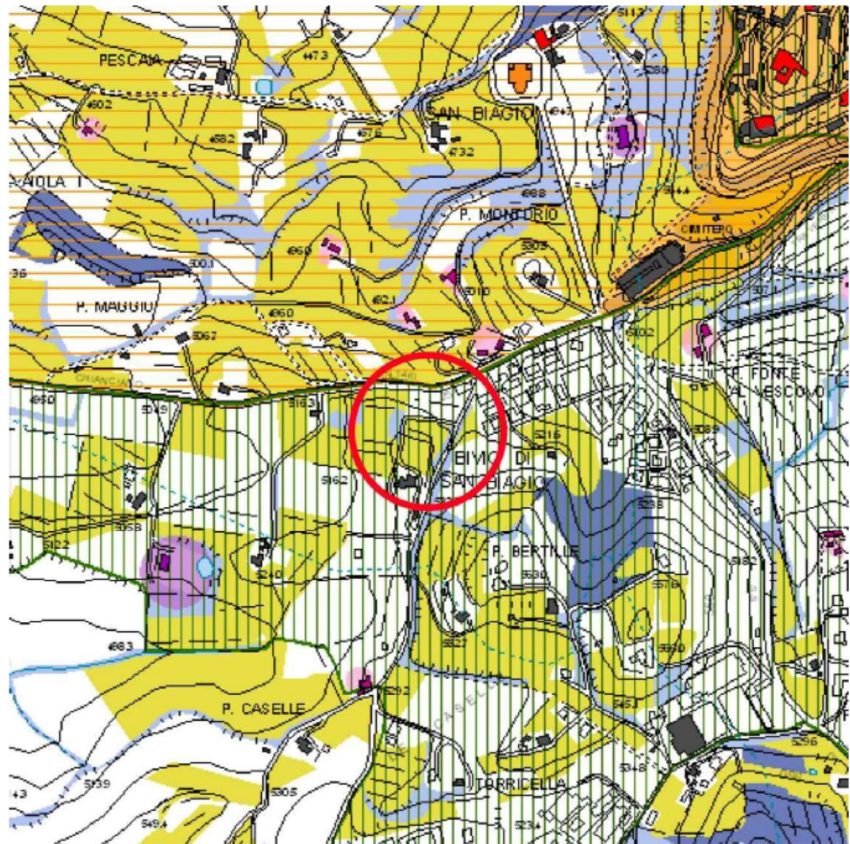
Sub-Sistemi di paesaggio

-  1 - Montepulciano
-  2 - le Crete
-  3 - Poggiano e Piancia
-  4 - Totona e Poggiardelli
-  5 - Sant'Albino
-  6 - La collina insediata
-  7 - Cervignano e Cerraie
-  8 - I colli di Valiano
-  9 - La pianura bonificata
-  10 - Il lago di Montepulciano
-  Il sistema degli insediamenti



SCALA 1:10000

P08.1_LE INVARIANTI STRUTTURALI



SCALA 1:10000

P09_SISTEMI FUNZIONALI

L e g e n d a

**Sistema funzionale:
agricoltura - ambiente - cultura - turismo**

Strutture ricettive:

- Agriturismo
- Albergo
- Affittacamere
- Casa Vacanza
- Residence
- Ricettività rurale
- Campeggio

Luoghi di ristoro

- Ristorante
- Bar

Luoghi della cultura

- Chiese
- Teatri
- Siti d'importanza archeologica
- Citta Murate

Servizi alla filiera agroalimentare

- Impianti sportivi
- Progetti di riqualificazione paesaggistica

Aree protette

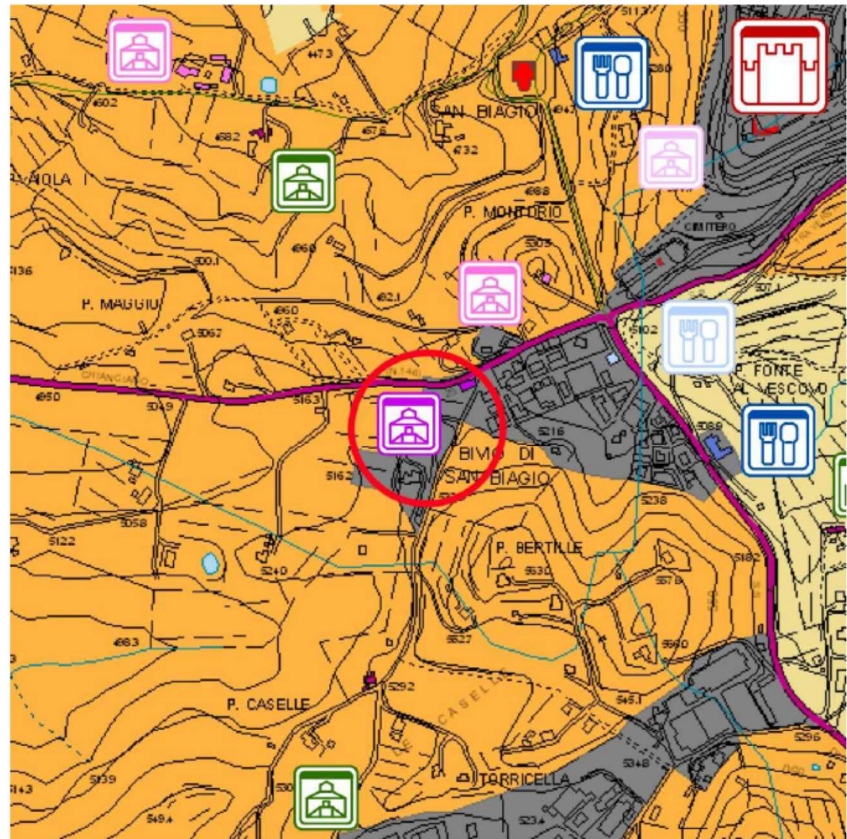
- Aree protette
- Centri urbani
- Cava di Sant'Albino

Sistema funzionale della produzione agricola

- Zone a prevalente funzione agricola
- Zone ad esclusiva funzione agricola
- Aree prevalentemente boscate

Sistema funzionale della mobilità

- Stazioni
- Nodi intermodali per il trasporto pubblico
- Viabilità ciclo-pedonale
- Viabilità collegamento locale
- Viabilità principale
- Autostrada A1



SCALA 1:10000

P10_U.T.O.E.

L e g g e n d a

Unità territoriali elementari

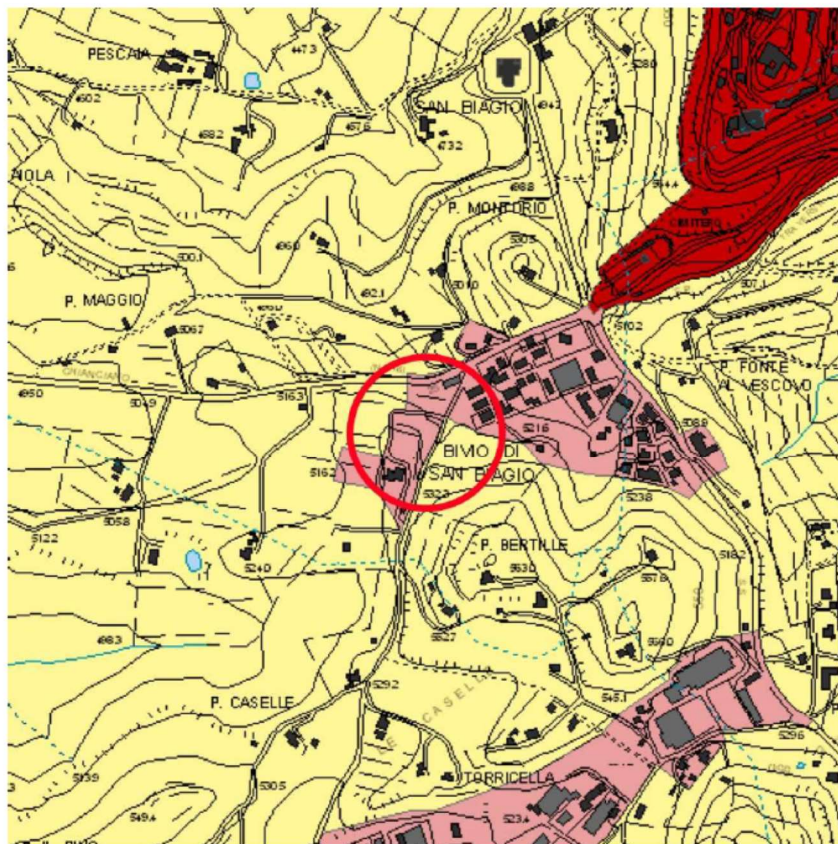
- Montepulciano
- S. Albino
- Abbadia
- Acquaviva
- Gracciano
- Stazione di Montepulciano
- Valiano
- Monoblocco

Ambiti urbani

- La città antica
- Le parti della città consolidata
- Le parti della città nuova
- Gli aggregati urbani
- Il polo ospedaliero di Nottola
- Cava di Sant' Albino: Area estrattiva da sottoporre a recupero ambientale
- Il distretto misto
- Impianti speciali
- Nuovo svincolo autostradale
- Campeggio
- Cittadella dello sport

Autostrada A1

Variante della s.p. 326



SCALA 1:10000

